



AS1 AC Retrofit Battery System

AS1-3KS-5.1



Quick storage retrofit on existing PV plants



Compatible with all inverter brands



Built-in 5.1kWh lithium battery (extendable)



With UPS function, switch time $\leq 10\text{ms}$



Easy setting of various working modes

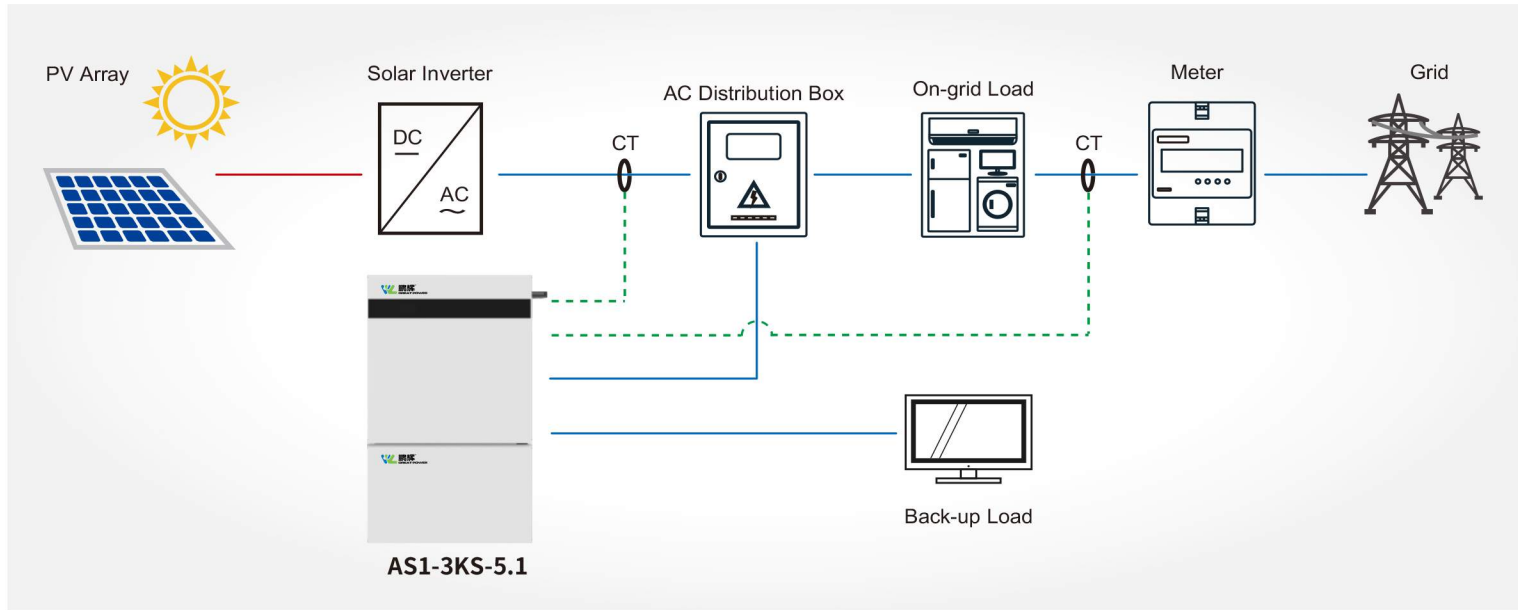
Guangzhou Greatpower Energy & Technology Co.,Ltd.

WEBSITE: www.greatpower.net

E-MAIL: info@greatpower.net

ADD: 912 Shiliang Road(xicun Section),Shawan,Panyu,Guangzhou,China

AS1 AC Retrofit Battery System



AS1-3KS-5.1 Datasheet

Type	AS1-3KS-5.1
Battery Parameters	
Battery Type	Lithium ion
Total Energy Capacity [Wh]	5120
Battery Capacity [Ah]	100
Rated Voltage [V]	51.2
Voltage range [V]	42~58.5
Depth Of Discharge [DOD]	≤90%
Cycle Life	≥6000
Max.Charge Current [A]	60
Max.Discharge Current [A]	60
Scalability	Yes (up to 20.4KWh)
Grid Parameters	
Max.Continuable Output Power [VA]	3000
Max.Output Current [A]@230Vac	13.1
Rated Grid/Backup Voltage/Range [V]	220, 230, 240/180~280
Rated Grid/Backup Frequency/Range [Hz]	50, 60/±5
Power factor [cos φ]	0.8 leading~0.8 lagging
Feed-in	L+N+PE
AC Output [Back-up Mode]	
Max. Continuable Output Power [VA]	3000
Output Voltage [V]	220/230/240
Max.Output Current [A]@230Vac	13.1
Output Frequency [Hz]	50/60
Max.Output Power [VA]	3600 ,10sec
General Data	
Communication Mode	Wi-Fi/4G/Ethernet (Optional)
Operating Temperature Range	-10°C~50°C
Cooling Method	Natural Convection
Ambient Humidity	0-95% Non-condensing
Noise [dBA]	<29
Ingress Protection	IP65
Dimensions [H*W*D][mm]	738*650*186
Weight [kg]	60
Standard Warranty [Year]	5 (Battery 7 years)
Applicable Standard	AS 4777.2, VDE 4105, G98, C10/C11, CE10-21, IEC62619, IEC62040